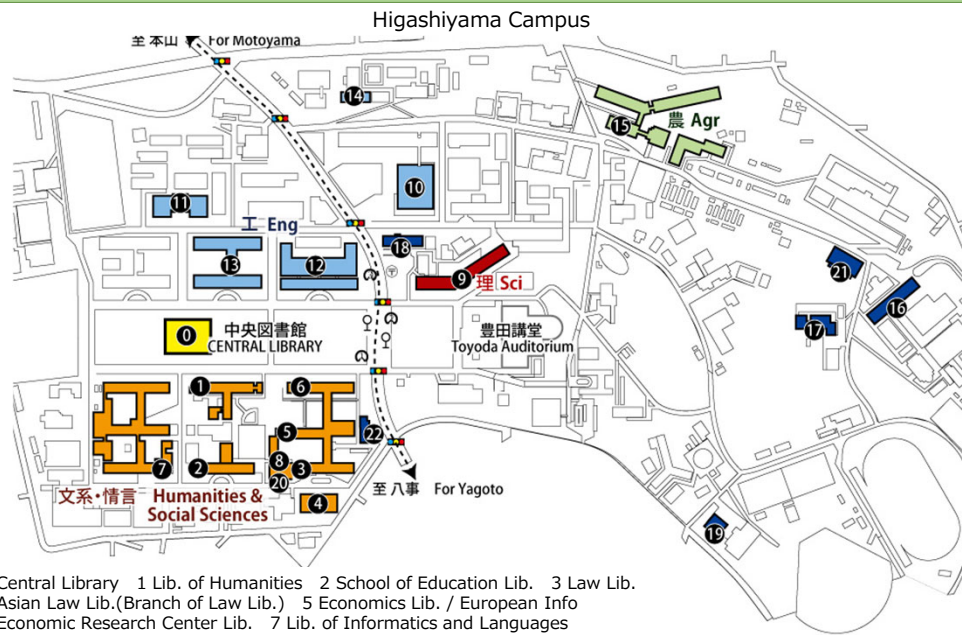
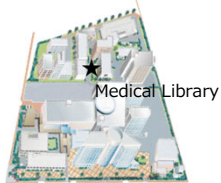


# Library Map



- 0 Central Library
- 1 Lib. of Humanities
- 2 School of Education Lib.
- 3 Law Lib.
- 4 Asian Law Lib.(Branch of Law Lib.)
- 5 Economics Lib. / European Info
- 6 Economic Research Center Lib.
- 7 Lib. of Informatics and Languages
- 8 Graduate School of International Development Lib.
- 9 Science Lib.
- 10 Central Engineering Lib.
- 11 Chemical & Biological Lib.
- 12 Electrical & Information Lib.
- 13 Mechanical & Aerospace Lib.
- 14 Civil Eng. Lib. (Closed until October 2026)
- 15 Bioagricultural Lib.
- 16 Lib., Solar-Terrestrial Sciences (ISEE Lib. #1)
- Inst. of Materials and Systems for Sustainability (in ISEE Lib. #1)
- 17 Lib., Hydrospheric-Atmospheric Sciences (ISEE Lib. #2)
- 18 Information Technology Center Lib.
- 19 Research Center of Health, Physical Fitness & Sports Lib.
- 20 Inst. of International Education & Exchange Lib.
- 21 Pharmaceutical Sciences Lib.
- 22 Gender Research Library

Tsurumai Campus



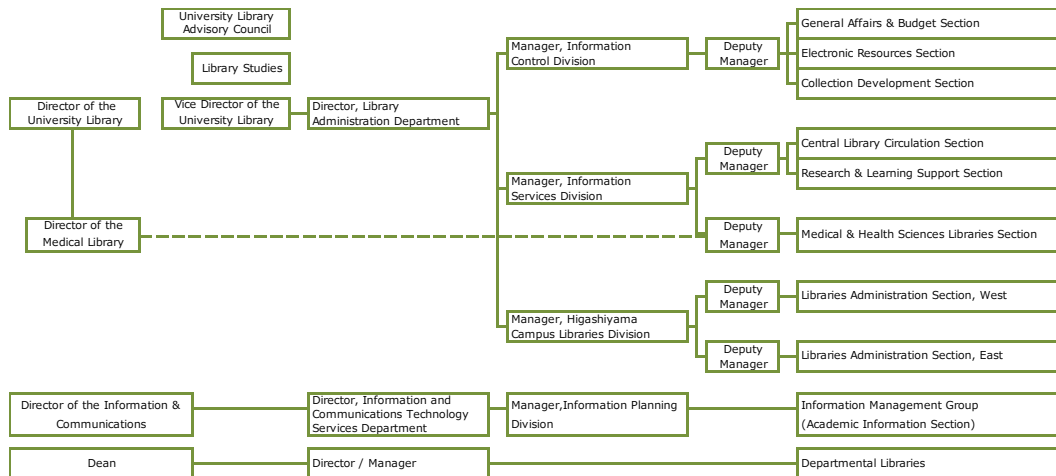
Daiko Campus



# Outline of Nagoya University Library

2024

## Management and Administration



# Tokai National Higher Education and Research System Library Grand Design 2021

We formulated the grand design about the way of being a library in Tokai National Higher Education and Research System, and are working on based on it. (Japanese only)

東海国立大学機構 図書館Grandデザイン2021

## 世界屈指の教育・研究を支える糧となる

### ■機構図書館のミッション

デジタルの進展によって情報があふれる世界において、人と情報をつなぐ図書館の役割はより重要になる。

世界中のどこからでも、いつでも、教育研究に必要な資料やサービスが利用できるデジタルライブラリー機能と、創造的学習を支援するフィジカル図書館機能を充実させ、世界で活躍する人材の育成に貢献するとともに、地域特有の文化・歴史を広く世界に向けて発信し、教育研究の振興に貢献する。

#### ■学修・教育支援■

人と情報をつなぐ、学びのパートナーとなる図書館

- 学修・教育に関する相談窓口の強化、顔の見える専門職員チームによるサポート
- 教員のパートナーとなり授業に沿った調査支援、情報リテラシー教育実施
- 電子書籍等、リモート学習教材の充実
- withコロナのアクティブラーニングスペース再構築、Libファクトリーが設置により学生の創造的学習を促す学習環境を提供
- アカデミックセンターを通じて両大学の共通教育に貢献
- オンライン授業コンテンツのアーカイブ支援

#### ■研究支援■

オープンサイエンスを推進する図書館

- 研究成果の管理・共有に関する相談窓口の強化、顔の見える専門職員チームによるサポート
- 研究データの管理・共有、研究成果の公開・社会に向けたアピールを推進
- 関連部署、各分野の教員とデータフォーマット管理のガイドラインを作成し、研究ノードの一元管理を推進
- 電子ジャーナル等研究に必要な資料へのアクセス確保、機密契約によるメリット

#### ■社会貢献■

地域に根ざした知的・文化的施設としての図書館

- 岐阜大学のアーカイブの増補資料、名古屋大学の高木家文書等の貴重資料の活用
- 貴重資料をデジタル化し、ジャパンサーチ連携により世界に向けて発信
- 機構プラットフォーム様のミッションに貢献
- 資料と人、人と人をつなぐ場として、地域の社会の生涯学習・キャリア教育に寄与
- 特定基金事業のPRや支援者との対話を通じて、地域社会との強固な信頼関係を構築

### ■蔵書構築/図書館運営■

大学の学術基盤を整え、機構内外から頼りになる存在として成長し続ける図書館

#### ■デジタル時代のRight-Scalingな蔵書構築

- 基本業務（選書・収集・管理、全国共同データベースへの登録・整理、提供（貸出/返却）、レファレンス（こんなことを調べたい等の疑問に資料や探し方を紹介）、ILL(海外を含む他大学との資料の貸借等)、リテラシー教育（情報の正しい探索・分析・評価・発信スキル向上）講習会の企画・実施等）の業務効率化を図るとともに、これら業務経験の概念的積み上げにより深化する専門性を活かして新たなサービスを展開

人材育成

岐阜大学・名古屋大学の職員が一体となった専門職集団としてこれらの取り組みを支え、さらなる専門性向上に努めることにより世界に冠たる東海国立大学機構の学術基盤を支え教育研究の振興に貢献

## History

- Apr. 1939 Nagoya Imperial University (School of Medicine, School of Science and Engineering) was established. Medical Library was established on School of Medical campus (Tsurumai-cho, Showa-ku) and a departmental library in each department.
- Oct. 1947 The libraries were renamed as Nagoya University Library.
- Oct. 1948 Nagoya University Library was relocated from Tsurumai-cho, Showa-ku to Minamisotobori-cho, Naka-ku.
- Dec. 1964 Furukawa Library (Central Library) was established on Higashiyama Campus.
- Oct. 1970 Nagoya University Library Bulletin Kanto was first published.
- Mar. 1973 Medical Library was established on Tsurumai Campus.
- Sep. 1981 New Central Library opened.
- Oct. 1994 Enlargement of the Central Library was completed.
- Apr. 2001 Nagoya University Library Studies was established.
- Feb. 2006 Nagoya Repository, a NAGOYA University Institutional Repository, launched.
- Dec. 2009 Learning Commons was established in Central Library.
- May. 2010 Coffee Shop opened in Central Library.
- July. 2010 Science Library opened.
- Jun. 2011 Central Engineering Library relocated to E & S building.
- Jun. 2012 Kanazawa, Shizuoka and Nagoya University Library have entered into an agreement to cooperate in a project that will promote learning.
- Mar. 2014 Central library was renovated.
- Mar. 2015 Medical Library (Tsurumai and Daiko Campuses) was renovated.
- Apr. 2016 Nagoya University Open Access Policy was prescribed.
- Apr. 2017 Nagoya University Library Support Fund was established.
- Nov. 2017 Gender Research Library opened.
- July. 2018 Biblio Salon was renamed as OKB TAKAGI Family Documents Exhibition Gallery.
- July. 2019 TAKAGI Family Documents were designated as Important Cultural Properties.
- Apr. 2020 Tokai National Higher Education and Research System was established.
- July. 2021 MakerSpace was established in Central Library.
- Sep. 2023 Naming rights project launched at Central Library.

## Main Collections

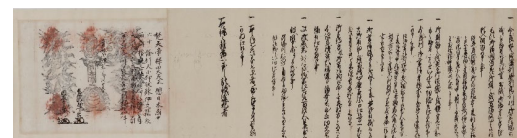
### Takagi Family Documents

The Takagi Family Documents is a collection of historical documents regarding the Toki and Tara districts of Ishizu-gun in the Mino Province (present day Kami Ishizu in Ogaki City, Gifu Prefecture). These documents were handed down to the Hatamoto Nishi-Takagi family—the retainers to the local gentry family. The collection includes approximately 100,000 documents, and although most of the retainer documents were lost during the fall of the Edo Shogunate, the scale and contents of these remaining documents are unprecedented. Not only do the Takagi Family Documents contribute to research on retainer feudalism, but the documents, which have been utilized across a range of fields, have also received positive evaluation and significant attention as Japan's largest systematic materials on rivers and flood control. To date, more than 52,000 documents have been cataloged. In addition to performing a full analysis of the Takagi Family Documents, we are working on the improvement of the restoration process and preservation environment for damaged and deteriorated documents as well as the document utilization environment.



The Grand Map of Kiso-Three-Rivers Basin

A pictorial map showing the river basin environment before Horeki river improvement (1754-1755) that the Takagi Family used for river management.



Horeki 4 - February 15, 1754 - Kishomon (Pledge Document)

### The Ito Keisuke Collection

This comprises a collection of 188 manuscripts written by Keisuke Ito, a pioneer of modern botany in Japan.



From Kinka Shokubutsu Zusetsu

### The Mizuta Library

This comprises a collection of about 8,600 volumes including original copies on the history of modern European social thought. These documents formerly belonged to the late Mizuta Hiroshi, a professor emeritus of Nagoya University and a member of the Japan Academy and his wife, Nagoya University of Economics professor emeritus Tamae Mizuta.



Part of the Mizuta Library

## Learning Commons

The Central Library Learning Commons is a newly established library space that supports autonomous study and encourages the pursuit of knowledge. The Learning Commons provides students with the following learning environment:

- An integrated learning environment within the library information infrastructure, enabling students to engage in group study and utilize information technology (IT) resources.
- An effective support service to develop information literacy competency.
- Provision of a wide array of information regarding academics and student life.



## Digitization and Dissemination of Academic Information

We have digitized the valuable materials held by the library such as the Takagi Family Documents, the Ito Keisuke Collection, and the Japanese-Chinese classical books etc. and making them available to the public on the "Tokai National Higher Education and Research System Academic Digital Archive".



<https://da.adm.thers.ac.jp/en>

We have also constructed the NAGOYA Repository (Nagoya University Institutional Repository) and disseminated academic information generated at the university, such as academic papers and dissertations.

<https://nagoya.repo.nii.ac.jp/lang/en>

## Statistics (Fiscal 2023)

### Collection

	Japanese	Non-Japanese	Total	Number of Journals
Central Library	716,561	519,725	1,236,286	17,867
Medical Library	109,776	80,812	190,588	5,857
Departmental Library	1,042,857	924,156	1,967,013	32,122
Total	1,869,194	1,524,693	3,393,905	55,846

### Facility

	Total Floor (m <sup>2</sup> )	Seating Capacity
Central Library	15,597	1,037
Medical Library	3,002	430
Departmental Library	10,176	582

### Library Service

	Days Open	Users Users from Outside ( )	Books Borrowed
Central Library	355	544,161 (13,357)	127,461
Medical Library	365	91,993 (270)	7,893
Departmental Library	130~258	330,710 (2,322)	71,321
Total	—	966,864 (15,949)	206,675

### E-Resource

E-Journals	18,607 titles
E-Journal downloaded	4,575,410 articles
E-books	48,830 titles
Database Search sessions	905,619 sessions
NAGOYA Repository submission	39,224 items